




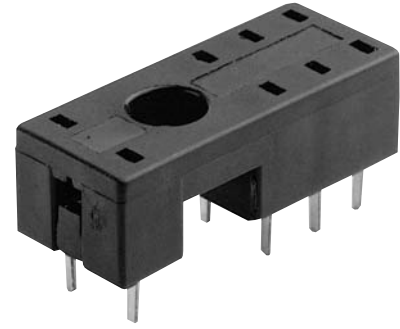


DESCRIPTION	5 and 8 Pin Slim Line Sockets
ELECTRICAL RATING	• 300 Volts, 10 Amps  ; 300 Volts, 12 Amps 
CONSTRUCTION	Contacts • Copper Alloy, Tin Plated Molding • Break Resistant Thermoplastic
AGENCY APPROVALS	• UL recognized, File No. E113714  • CSA certified, File No. 172852  • CE 

EC SERIES

RELAY SOCKETS



ORDERING CODE

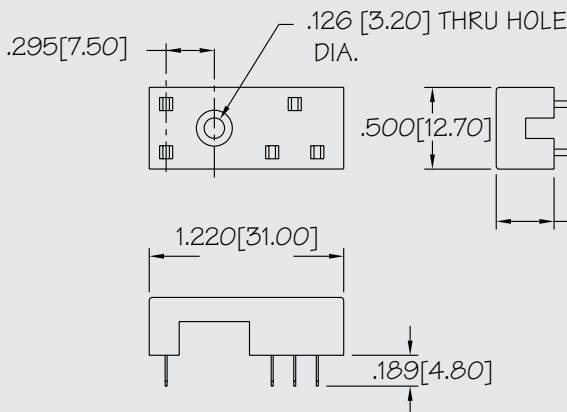
PART NO.	DESCRIPTION	TERMINAL TYPE
EC35	SPDT, 5 Pin Slim Line (Fig. 1)	PC Board
EC50	DPDT, 8 Pin Slim Line (Fig. 2)	PC Board

ACCESSORIES

PART NO.	DESCRIPTION (Refer to the accessories pages 25-27)
MH12-2	Hold Down Spring Steel
MH16-2	Hold Down Spring Steel
MH25-2	Hold Down Spring Steel
MP12-2	Hold Down Spring Plastic
MP16-2	Hold Down Spring Plastic
MP25-2	Hold Down Spring Plastic



Fig. 1



PC BOARD LAYOUT

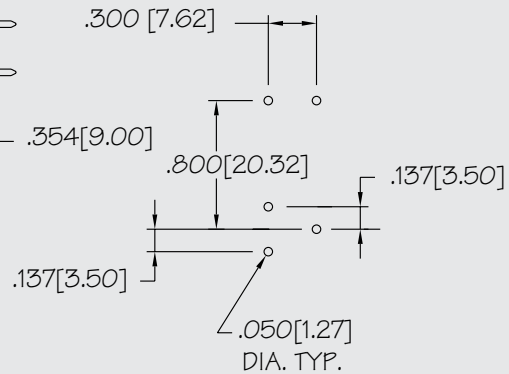
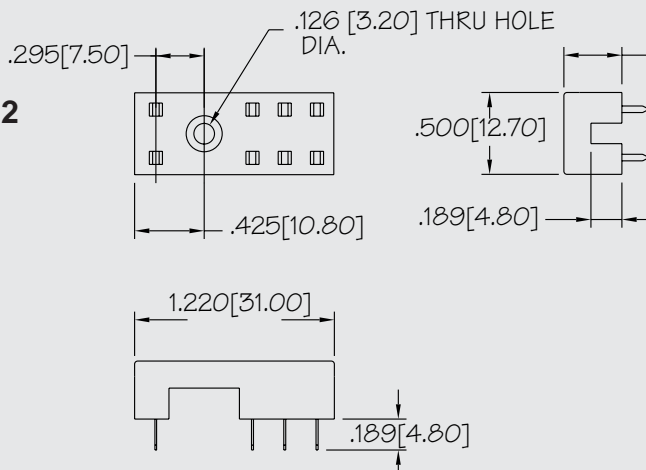


Fig. 2



PC BOARD LAYOUT

